

MECO SEALS

# ATEX Seals



## What it is

ATEX is a series of explosion prevention standards, codified in 2014/34/EU, to which equipment manufacturers must conform, in order to place machinery in service in Europe in potentially explosive environments. Compliance involves formal risk assessments and the use of certified machinery and components. ATEX was mandated in 2003, after which time new machinery must be compliant. Upgrades or retrofits to machinery which was in service prior to 2004 must also be ATEX-compliant.

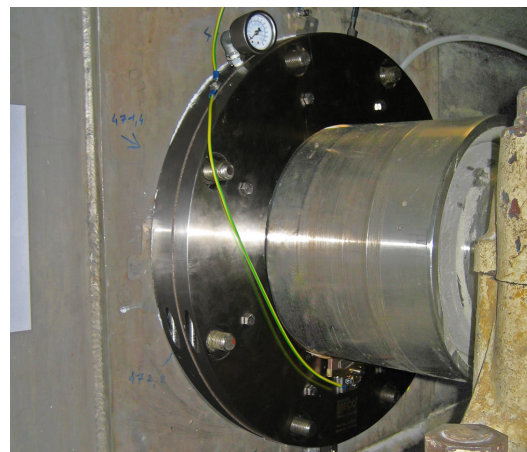
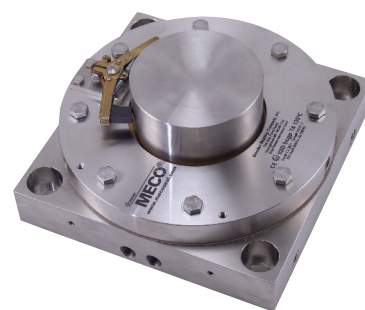
## How it works

For retrofit applications, where a new seal will be mounted on an older piece of machinery placed into service prior to adoption of the ATEX Directive, we offer seals specifically EX-marked for ATEX service. For new machinery, equipment manufacturers can opt to purchase EX-marked and tested seals, or they may equip their new machines with a variety of unmarked MECO models, and then include the seals under the umbrella of their ATEX declaration for the completed machine.

## How ours are different

Our soft-face technology uses materials with high inherent lubricity, which run cooler than radial, constricting seals without the use of fluid lubricants.

Several MECO seal models are available with ATEX certification. Each undergoes a formal risk assessment and includes protective measures to eliminate ignition sources, control surface temperatures, and isolate process from the atmosphere. Before leaving the factory, every EX-marked MECO seal is run-tested under simulated process conditions to verify compliance with temperature class and safety margin requirements. A thermal test certificate is provided with each seal.



To learn more and to find out if **ATEX Seals** are the right seals for you, please give us a call, or submit an online application today!

woodex-meco.com | +1 207.371.2210 | sales@woodex-meco.com

216 Bay Point Road, Georgetown, ME 04548 U.S. | © Woodex Bearing Company, Inc. 2025

