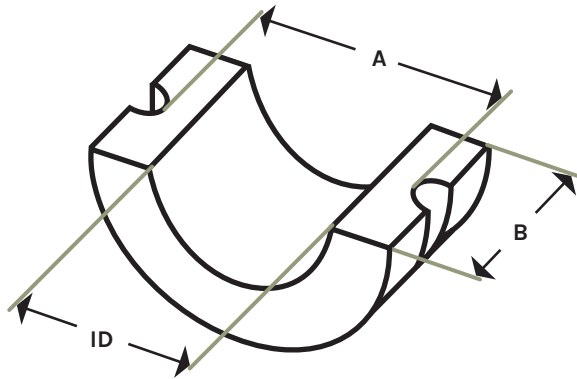


Screw Conveyor Hanger Bearings: Type 18B



Used to support the rotating shaft in screw-conveying machinery. Ensures alignment, distributes weight, and provides smooth, low-friction rotation, even in applications involving abrasive or corrosive materials.

Fits hanger styles 18B, 19B, 17 & 40. Custom sizes available upon request.

Part No.	ID	A	B
WX1000-18B	1"	1 1/2"	1 7/16"
WX1506-18B (6" TROUGH)	1 1/2"	2"	1 15/16"
WX1509-18B (9" TROUGH)	1 1/2"	2 3/8"	1 15/16"
WX2000-18B	2"	3"	1 15/16"
WX2716-18B	2 7/16"	3 11/16"	2 15/16"
WX3000-18B	3"	4 1/8"	2 15/16"
WX3716-18B	3 7/16"	4 11/16"	3 15/16"



To learn more and to find out if the **Screw Conveyor Hanger Type 18B Bearings** are right for you, please give us a call, or submit an online application today!

