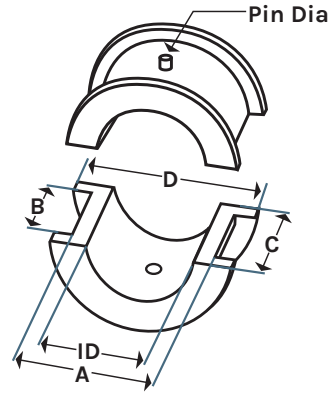


# Screw Conveyor Hanger Bearings: Type 226



Used to support the rotating shaft in screw-conveying machinery. Ensures alignment, distributes weight, and provides smooth, low-friction rotation, even in applications involving abrasive or corrosive materials.

Fits hanger styles 226, 220, 326, 20B, 26B, 28B. Custom sizes available upon request.

Part No.	ID	A	B	C	D
WX1000-226	1"	1 1/2"	1 1/16"	1 7/16"	1 7/8"
WX1250-226	1 1/4"	2 1/8"	1 9/16"	1 15/16"	2 1/2"
WX1500-226	1 1/2"	2 1/8"	1 9/16"	1 15/16"	2 1/2"
WX2000-226	2"	2 3/4"	1 9/16"	1 15/16"	3 1/8"
WX2716-226	2 7/16"	3 1/4"	2 3/8"	2 15/16"	3 3/4"
WX3000-226	3"	4"	2 3/8"	2 15/16"	4 1/2"
WX3716-226	3 7/16"	4 3/4"	3 1/8"	3 15/16"	5 1/2"



To learn more and to find out if the **Screw Conveyor Hanger Type 226 Bearings** are right for you, please give us a call, or submit an online application today!

