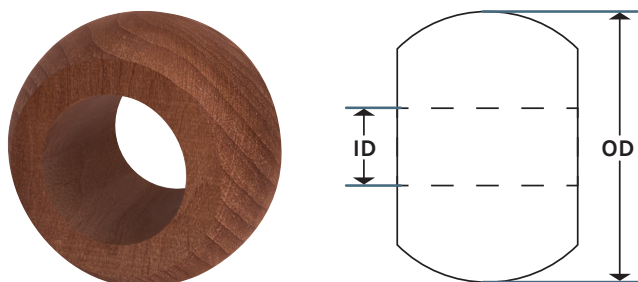


## Spherical Bearings



### REPLACEMENT SPHERICAL BEARINGS

† Specify shaft Diameter expressed in 16ths  
(Ex:  $\frac{1}{2}$  = 8,  $\frac{3}{4}$  = 12, etc.)

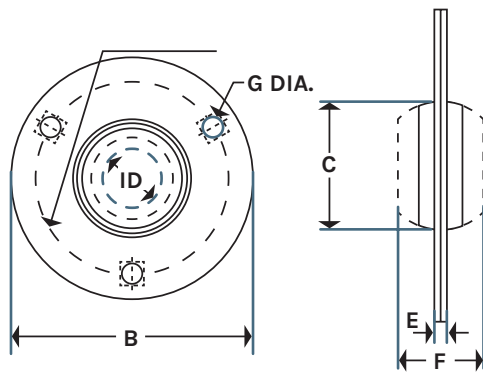
‡ Add “M” to end of part number if application is wet or moist, or “D” if the application is dry.

### SOLID SPHERICAL BEARINGS

Part No.	ID Range	Sphere OD
WA27 -††	$\frac{1}{2}$ " to 1"	1 $\frac{11}{16}$ "
WA32 -††	$\frac{3}{4}$ " to 1 $\frac{1}{4}$ "	2"
WA40 -††	1" to 1 $\frac{3}{4}$ "	2 $\frac{1}{2}$ "
WA40m -††	$\frac{1}{2}$ " to $\frac{7}{8}$ "	40mm (1.575")
WA47m -††	$\frac{3}{4}$ " to 1"	47mm (1.850")
WA52m -††	$\frac{13}{16}$ " to 1 $\frac{1}{8}$ "	52mm (2.047")
WA62m -††	1 $\frac{1}{16}$ " to 1 $\frac{1}{2}$ "	62mm (2.441")
WA72m -††	1 $\frac{1}{4}$ " to 2"	72mm (2.835")
WA80m -††	1 $\frac{1}{2}$ " to 1 $\frac{7}{8}$ "	80mm (3.150")
WA85m -††	1 $\frac{5}{8}$ " to 2"	85mm (3.346")
WA90m -††	1 $\frac{13}{16}$ " to 2 $\frac{1}{4}$ "	90mm (3.543")
WA100 -††	2" to 2 $\frac{1}{2}$ "	100mm (3.937")

### SPLIT SPHERICAL BEARINGS

Part No.	ID Range	Sphere OD
WAS27 -††	$\frac{1}{2}$ " to 1"	1 $\frac{11}{16}$ "
WAS32 -††	$\frac{3}{4}$ " to 1 $\frac{1}{4}$ "	2"
WAS40 -††	1" to 1 $\frac{3}{4}$ "	2 $\frac{1}{2}$ "
WAS40m -††	$\frac{1}{2}$ " to $\frac{7}{8}$ "	40mm (1.575")
WAS47m -††	$\frac{3}{4}$ " to 1"	47mm (1.850")
WAS52m -††	$\frac{13}{16}$ " to 1 $\frac{1}{8}$ "	52mm (2.047")
WAS62m -††	1 $\frac{1}{16}$ " to 1 $\frac{1}{2}$ "	62mm (2.441")
WAS72m -††	1 $\frac{1}{4}$ " to 2"	72mm (2.835")
WAS80m -††	1 $\frac{1}{2}$ " to 1 $\frac{7}{8}$ "	80mm (3.150")
WAS85m -††	1 $\frac{5}{8}$ " to 2"	85mm (3.346")
WAS90m -††	1 $\frac{13}{16}$ " to 2 $\frac{1}{4}$ "	90mm (3.543")
WAS100 -††	2" to 2 $\frac{1}{2}$ "	100mm (3.937")

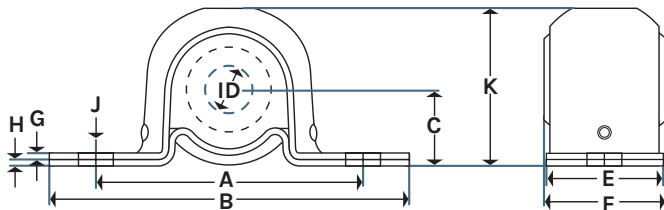


### CENTER FLANGE MOUNTED SPHERICAL BEARINGS

† Specify shaft Diameter expressed in 16ths  
(Ex:  $\frac{1}{2}$  = 8,  $\frac{3}{4}$  = 12, etc.)

‡ Add "M" to end of part number if application is wet or moist, or "D" if the application is dry.

Part No.	A	B	C	E	F	G	Sphere OD	ID Range
CKW -††	1 $\frac{3}{4}$ "	2 $\frac{3}{8}$ "	1 $\frac{1}{8}$ "	$\frac{1}{8}$ "	$\frac{1}{2}$ "	$\frac{17}{64}$ " Rd.	1"	$\frac{1}{4}$ " to $\frac{5}{8}$ "
CBW -††	2 $\frac{3}{4}$ "	3 $\frac{1}{2}$ "	1 $\frac{13}{16}$ "	$\frac{1}{8}$ "	1 $\frac{1}{4}$ "	$\frac{9}{32}$ " Rd.	1 $\frac{11}{16}$ "	$\frac{1}{2}$ " to 1"
EEW -††	3"	3 $\frac{3}{4}$ "	2 $\frac{3}{16}$ "	$\frac{5}{32}$ "	1 $\frac{1}{2}$ "	$\frac{11}{32}$ " Sq.	2"	$\frac{3}{4}$ " to 1 $\frac{1}{4}$ "
EFW -††	3 $\frac{9}{16}$ "	4 $\frac{7}{16}$ "	2 $\frac{11}{16}$ "	$\frac{5}{32}$ "	1 $\frac{3}{4}$ "	$\frac{13}{32}$ " Sq.	2 $\frac{1}{2}$ "	1" to 1 $\frac{3}{4}$ "

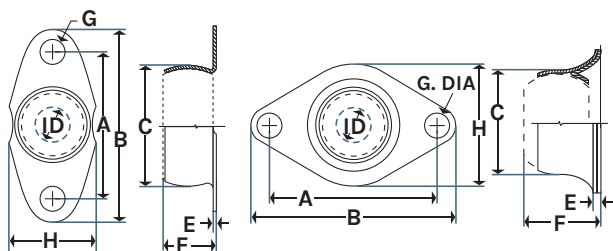


### PILLOW BLOCK MOUNTED SPHERICAL BEARINGS

† Specify shaft Diameter expressed in 16ths  
(Ex:  $\frac{1}{2}$  = 8,  $\frac{3}{4}$  = 12, etc.)

‡ Add "M" to end of part number if application is wet or moist, or "D" if the application is dry.

Part No.	Mount Weight	A	B	C	E	F	G	H	J (Slot)	K	Sphere OD	ID Range
BDW -††	Miniature	1 $\frac{3}{4}$ "	2 $\frac{15}{16}$ "	$\frac{9}{16}$ "	$\frac{7}{16}$ "	$\frac{7}{16}$ "	$\frac{7}{16}$ "	$\frac{7}{16}$ "	$\frac{17}{64}$ " x $\frac{5}{16}$ "	1 $\frac{1}{8}$ "	1"	$\frac{1}{4}$ " to $\frac{5}{8}$ "
BBW -††	Standard	2 $\frac{7}{8}$ "	3 $\frac{5}{16}$ "	$\frac{29}{32}$ "	1 $\frac{1}{8}$ "	1 $\frac{1}{8}$ "	1 $\frac{1}{8}$ "	1 $\frac{1}{8}$ "	$\frac{21}{64}$ " x $\frac{21}{32}$ "	1 $\frac{3}{4}$ "	1 $\frac{11}{16}$ "	$\frac{1}{2}$ " to 1"
BCW -††	Standard	3 $\frac{1}{4}$ "	4 $\frac{9}{16}$ "	1 $\frac{1}{16}$ "	1 $\frac{5}{16}$ "	1 $\frac{5}{16}$ "	1 $\frac{5}{16}$ "	1 $\frac{5}{16}$ "	$\frac{25}{64}$ " x $\frac{5}{8}$ "	2 $\frac{1}{16}$ "	2"	$\frac{3}{4}$ " to 1 $\frac{1}{4}$ "
BEW -††	Heavy	2 $\frac{31}{32}$ "	4 $\frac{9}{32}$ "	$\frac{15}{16}$ "	1 $\frac{1}{8}$ "	1 $\frac{1}{8}$ "	1 $\frac{1}{8}$ "	1 $\frac{1}{8}$ "	$\frac{21}{64}$ " x $\frac{21}{32}$ "	1 $\frac{13}{16}$ "	1 $\frac{11}{16}$ "	$\frac{1}{2}$ " to 1"
BFW -††	Heavy	3 $\frac{21}{64}$ "	4 $\frac{5}{8}$ "	1 $\frac{3}{32}$ "	1 $\frac{5}{16}$ "	1 $\frac{5}{16}$ "	1 $\frac{5}{16}$ "	1 $\frac{5}{16}$ "	$\frac{25}{64}$ " x $\frac{19}{32}$ "	2 $\frac{1}{8}$ "	2"	$\frac{3}{4}$ " to 1 $\frac{1}{4}$ "
BKW -††	Extra Heavy	3 $\frac{7}{8}$ "	5 $\frac{7}{16}$ "	1 $\frac{11}{32}$ "	1 $\frac{7}{16}$ "	1 $\frac{7}{16}$ "	1 $\frac{7}{16}$ "	1 $\frac{7}{16}$ "	$\frac{21}{64}$ " x $\frac{5}{32}$ "	2 $\frac{11}{16}$ "	2 $\frac{1}{2}$ "	1" to 1 $\frac{3}{4}$ "

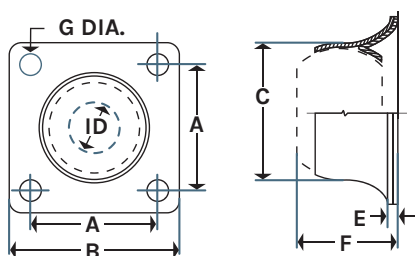


## 2-BOLT SIDE FLANGE MOUNTED SPHERICAL BEARINGS

† Specify shaft Diameter expressed in 16ths  
(Ex:  $\frac{1}{2}$  = 8,  $\frac{3}{4}$  = 12, etc.)

‡ Add “M” to end of part number if application is wet or moist, or “D” if the application is dry.

Part No.	A	B	C	E	F	G	H	Sphere OD	ID Range
FMW -†‡	1 $\frac{3}{4}$ "	2 $\frac{5}{16}$ "	1 $\frac{1}{8}$ "	$\frac{1}{16}$ "	$\frac{9}{16}$ "	$\frac{9}{32}$ "	1 $\frac{1}{8}$ "	1"	$\frac{1}{4}$ " to $\frac{5}{8}$ "
FAW -†‡	2 $\frac{3}{4}$ "	1 $\frac{13}{16}$ "	1 $\frac{13}{16}$ "	$\frac{1}{8}$ "	1 $\frac{11}{32}$ "	$\frac{21}{64}$ "	2 $\frac{7}{16}$ "	2 $\frac{7}{16}$ "	$\frac{1}{2}$ " to 1"
FBW -†‡	3 $\frac{9}{32}$ "	2 $\frac{5}{32}$ "	2 $\frac{5}{32}$ "	$\frac{9}{64}$ "	1 $\frac{9}{16}$ "	$\frac{13}{24}$ "	2 $\frac{3}{4}$ "	2 $\frac{3}{4}$ "	$\frac{3}{4}$ " to 1 $\frac{1}{4}$ "



## 4-BOLT SIDE FLANGE MOUNTED SPHERICAL BEARINGS

† Specify shaft Diameter expressed in 16ths  
(Ex:  $\frac{1}{2}$  = 8,  $\frac{3}{4}$  = 12, etc.)

‡ Add “M” to end of part number if application is wet or moist, or “D” if the application is dry.

Part No.	A	B	C	E	F	G	Sphere OD	ID Range
FDW -†‡	1 $\frac{5}{16}$ "	2 $\frac{7}{16}$ "	1 $\frac{13}{16}$ "	$\frac{1}{8}$ "	1 $\frac{13}{32}$ "	$\frac{17}{64}$ "	1 $\frac{11}{16}$ "	$\frac{1}{2}$ " to 1"
FEW -†‡	2 $\frac{5}{16}$ "	3"	2 $\frac{5}{32}$ "	$\frac{9}{64}$ "	1 $\frac{9}{16}$ "	$\frac{13}{32}$ "	2"	$\frac{3}{4}$ " to 1 $\frac{1}{4}$ "
FFW -†‡	2 $\frac{3}{4}$ "	3 $\frac{5}{8}$ "	2 $\frac{11}{16}$ "	$\frac{11}{64}$ "	1 $\frac{13}{16}$ "	$\frac{13}{32}$ "	2 $\frac{1}{2}$ "	1" to 1 $\frac{3}{4}$ "



To learn more and to find out if Woodex is the right material for you,  
please give us a call, or submit an online application today!

woodex-meco.com | +1 207.371.2210 | sales@woodex-meco.com

216 Bay Point Road, Georgetown, ME 04548 U.S. | © Woodex Bearing Company, Inc. 2025

