

WOODEX BEARINGS

Hydro Turbine

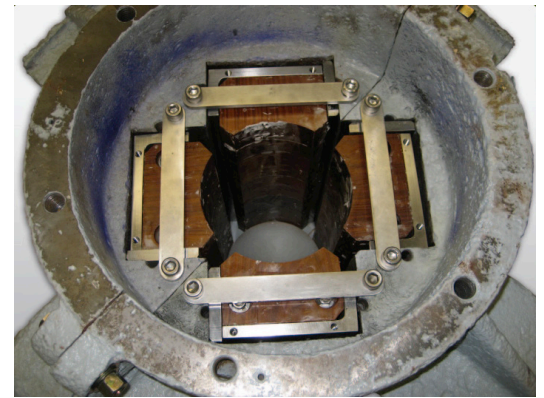


A leader in wood bearing technology for over 100 years, Woodex® has the design savvy and manufacturing expertise to serve your most demanding bearing needs.

Wood remains one of the best bearing materials for submerged operation in hydroelectric turbines. Lignum vitae, a very dense tropical hardwood, has long been the traditional hydro turbine bearing material, often offering decades of service. Now, protected as endangered, lignum vitae, or lig, has become exceedingly difficult and expensive to acquire.

Woodex® impregnated maple is an approachable and cost-effective alternative to lignum vitae. Filled with a petroleum wax, the wood performs well while producing minimal wear to the shaft. In addition, while lig bearings must be kept wet at all times, Woodex® material's impregnated lubricant allows it to run dry without damage. This allows Woodex® to survive overspeed conditions in horizontal-shaft turbines where lig cannot.

Segmented wood quarter-block bearings are typically fabricated as a bolt-up assembly, but glue-laminated maple bearings are also available. Our design team uses your original equipment drawings, existing bearings, measured dimensions and your shaft speed and load information to produce reliable yet economical bearings, tailor-made for your machinery.



To learn more and to find out if Woodex is the right material for you, please give us a call, or submit an online application today!

woodex-meco.com | +1 207.371.2210 | sales@woodex-meco.com

216 Bay Point Road, Georgetown, ME 04548 U.S. | © Woodex Bearing Company, Inc. 2025

